



Kimi News, Week 4, Term 3, 2016

Recently we had a visit from Titiro Whakamua, teen parent unit.

"At Titiro Whakamua we try to encourage the students to be aware of the needs of others in our community. With this in mind they have made alphabet books for the students at Kimi Ora. The books are both simple yet appealing to older students. The Titiro Whakamua students have made similar books before and this new set are destined for Evans Bay so that they too can make easy use of these lovely little books. The students at Titiro have also created a large number of tactile number cards for use with our students who are visually impaired. The best part of the visit though, was having the young ladies join in with a fun session called Ring a Ding Ding. It was a great experience for everyone involved."

Katie Thompson

Thank you so much to Katie and her students for all the work they have put into these beautiful resources!

Term Dates

Term 3 -
25 July - 23 Sept

Term 4 -
10 Oct - 16 Dec

Final Dance Show
Performance -
Thursday 25th
August



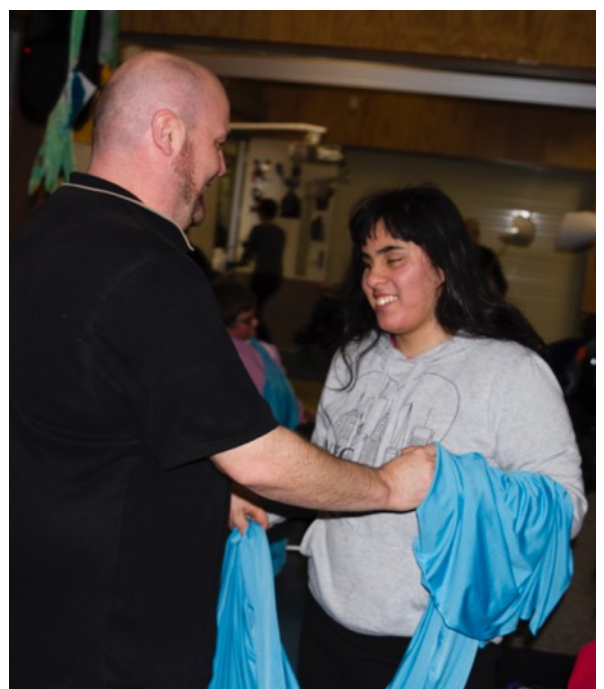
Snippets from the Dance Show rehearsal...





The night Max wore his wolf suit and made mischief of one kind, and another his mother called him "Wild Thing"...

Photos from the Where the Wild Things are dance rehearsal.





The annual Wellington Going Bananas Stage Show, in support of the Brain Injured Children Trust, for children with Special Needs and their families or carers this year is being held on Friday 16th September at 6:00pm at the Sacred Heart College Performing Arts Centre 65 Laings Rd, Lower Hutt.

It is a fantastic live interactive show which changes each year and is aimed at the 3 – 15 year age group (and lots of fun for all ages watching the children having fun!).

More information is on their website www.thegoingbananasshow.co.nz

Tickets are free, however they would like RSVPs this week. If you would like tickets please email suep@kimiora.school.nz or ask request them via your child's teacher.

Wheelchair Basketball

This Sunday 21st Aug 1pm-3pm.

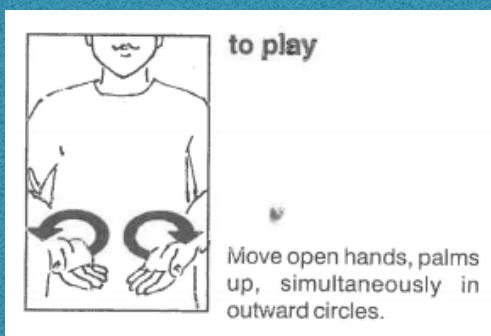
For anyone aged 5-18 with a physical disability

The wheelchair basketball session is always a really fun with learning how to use the sports wheelchairs as well as working on some basketball ball skills in a fun and adaptive way! If you are keen to attend then please let Melissa at Parafed know as soon as possible.

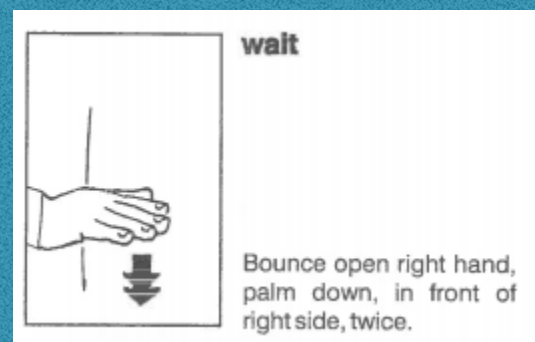
Parafed Wellington

ASB Sports Centre

72 Kemp St, Kilbirnie



Words we
are
learning...





Brickcon 2016

On Sunday 9th October, between 8am and 9am the Brockton lego event will be exclusively open for children and families with extra needs who would benefit from a quieter and less crowded space to engage with the event. This time will not be open to the general public.

There will be a special competition for children to win a Lego set during this time slot.

This special session will be limited to 100 families to ensure it remains quieter and less crowded. The Wellington Lego User Group will be providing free entry to the 100 families for this time slot of 8-9am on Sunday. Registrations are essential.

For more info about last year's event see: <http://well-lug.nz/brickcon2015.php>

This year the event will be at Expressions Arts Centre, Upper Hutt.

Contact james@webber.net.nz if you want more info or to register for tickets.



Congratulations to Mataese, Aitken, Rosie C, James T and JJ for winning the student of the week awards!

Mataese for using her legs a lot more in the standing sling and for an improvement in using her vision.

Aitken for using his iPad to share photos and videos.

James Trolove for using the words 'more' and 'stop', via switches, to control the hairdryer.

JJ for clearly communicating 3 different things via his PODD.



Rosie Collyns for great category sorting and using her PODD with support.





Kimi Ora School

PO Box 35017,
Naenae 5041
Ph: 567 5834

18 August 2016

RENEW

TAKE A DAY TO REFLECT
AND MAKE THE MOST OF LIFE'S GOOD BITS



**Sometimes you just need a day out from the
hustle and bustle of life.**

**Come and join us to recharge your batteries ready to build a positive future for
your family.**

Renew is a workshop where you can meet other families who are raising a family member with a disability, and is facilitated by our specially trained facilitator. The workshop covers:

- Growing your natural supports
- Understanding the grief process
- Techniques to manage stress
- Ways to build your family's resilience

The Renew workshop is a day of self reflection, that will leave you energised, with new friends and ideas. The workshop, lunch and morning tea are all provided at no cost.

WHEN

9.30am - 4.30pm

Sunday 11 September 2016

WHERE

Wellington Region – venue to be advised

If you have any queries, please do not hesitate to contact us by phone on
04 569 9398 or email wellington@parent2parent.org.nz

CARE MATTERS
LEARNING & WELLBEING

*This workshop was made possible with funding from
Care Matters.*



Kimi Ora School

PO Box 35017,
Naenae 5041
Ph: 567 5834

18 August 2016



Youth Group TERM 3 Calendar

25 July – 07 October 2016

Date	Activity	Details
6 Aug	Ten Pin Bowling	Strike Entertainment 399 Hutt Road, Petone
21 Aug	Wheelchair Basketball	ASB Sports Centre
3 Sept	Paralympics Celebration	ASB Sports Centre
18 Sept	Arts Splash	Laura Fergusson Trust 18 Laura Fergusson Grove, NaeNae, Lower Hutt
24 Sept-10 Oct	School Holidays	
1 Oct	Indoor Softball	ASB Sports Centre

We will notify you through emails and our facebook page of other events and/or activities which may be of interest to our Youth Group.

Reminder emails
will be sent closer to
the time of each
event as changes to
activities and times
may occur

Please RSVP to
secure a place.
Spaces can often be
limited and we need
to inform the
providers

Always bring your
own snacks, water
& wear
appropriate
clothing for the
activity



Kimi Ora School

PO Box 35017,
Naenae 5041
Ph: 567 5834

18 August 2016