



## Kimi News, Week 4, Term 1, 2016

This week students have had a fabulous time taking part in some EOTC (Education Outside the Classroom) events. People headed off to Otari-Wilton Bush, Staglands, Ten-Pin Bowling and experienced kite making, water exploration, a scavenger hunt, and camp fire cooking.

We have decided to spread out the EOTC days so that the students are not too tired to be able to make the most of them.

### Next week's EOTC events:

#### Tuesday 1st March

Naenae students will be staying at school and accessing a number of exciting EOTC activities such as sausage making and cooking, water-play, damper making, kites and a sensory wonderland in the Taj Mahal! Parents and whanau are more than welcome to visit anytime during the day.

### Coordinating care is important work...

At MyCare we make it easier! Many families use a range of care services – some paid with public funding, some privately, some provided by community organisations, and some by family or friends.

If you're looking for more help, MyCare's Match is where you can find carers who live in your community and are seeking clients. Hundreds of workers have created profiles at MyCare.

Use Match to list a job; find workers; review qualifications, experience and safety information; arrange interviews; select and hire; or just keep a list of favourites for when you need help at short notice.

If your child is receiving funded disability support services, you can access the carer matching service for free. Just contact your local NASC and ask for a referral. The other services have an annual subscription fee.

Visit their website for more information: <https://www.mycare.co.nz/>

#### Term Dates

Term 1 last day -  
 Friday 15 April  
 Easter break -  
 Fri 25 - Tues 29

Term 2 -  
 2 May - 8 July

Term 3 -  
 25 July - 23 Sept

Term 4 -  
 10 Oct - 16 Dec



#### **Cup Winners**

Congratulations to Blake for catching the bus independently from Lower Hutt to Naenae!

Congratulations to Ya for doing so well with communicating. Ya is doing a great job of learning to use PECS and sign language.



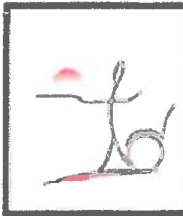
### **Easter Break**

Please note that this term includes an Easter Holiday break. The holiday days are:

Friday 25 March, Monday 28 March and Tuesday 29 March.



Remember to send some sun screen and a sun hat into school.



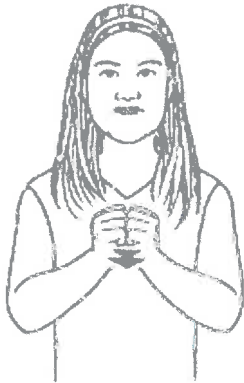
# Kimi Ora School

PO Box 35017,  
Naenae 5041  
Ph. 567 5834

24 February 2016

Word of the week

friend      hoa



We were so fortunate to have beautiful weather for the beginning of our EOTC days. Below is a photo of the Evans Bay crew during the picnic at Otari Wilton Bush. The day included a bush walk, sausage sizzle, frisbee, paddling in the stream and checking out the local eel.

# WELCOME

A huge welcome to Fletcher and his family. Fletcher has joined Kotuku Class at Naenae.

